

**Topic : Haloalkene and Haloarenes**
**Type of Questions**

Single choice Objective ('-1' negative marking) Q.1 to Q.7

(3 marks 3 min.)

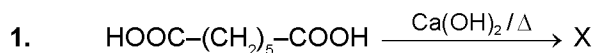
M.M., Min.

[21, 21]

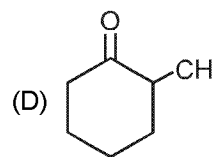
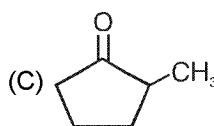
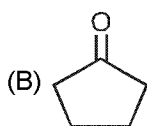
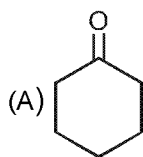
Subjective Questions ('-1' negative marking) Q.8

(4 marks 5 min.)

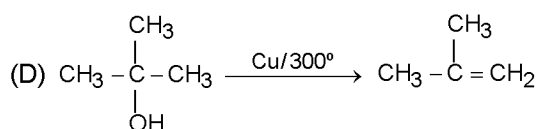
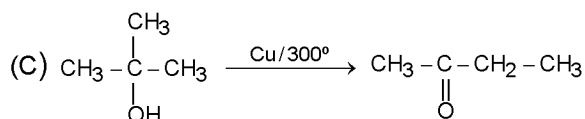
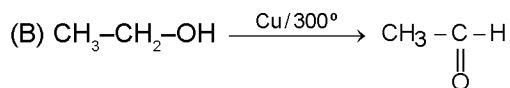
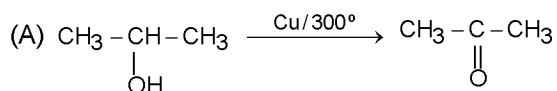
[4, 5]



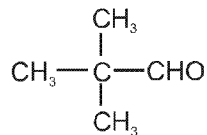
Compound X is :



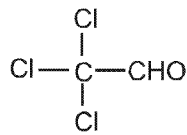
2. Which of the following reaction is incorrect ?



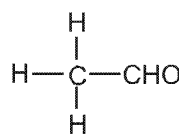
3. The relative rates of following compounds towards nucleophilic addition reaction follow the order.



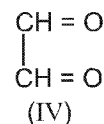
(I)



(II)



(III)



(IV)

(A) I &gt; II &gt; III &gt; IV

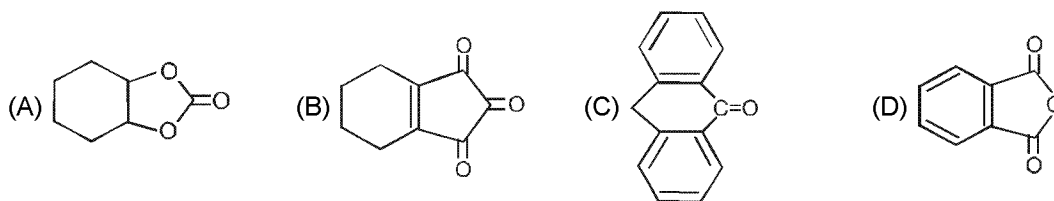
(B) II &gt; IV &gt; I &gt; III

(C) III &gt; IV &gt; II &gt; I

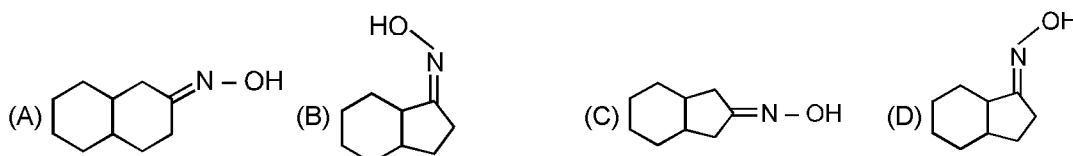
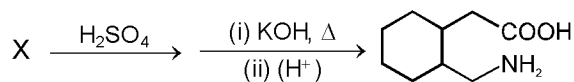
(D) IV &gt; II &gt; III &gt; I



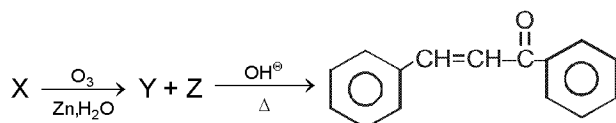
4. The stable hydrate is formed by



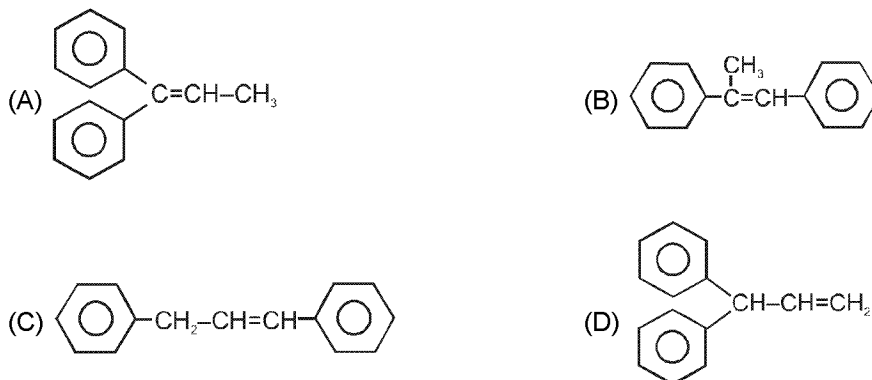
5. Identify 'X' in the following reaction



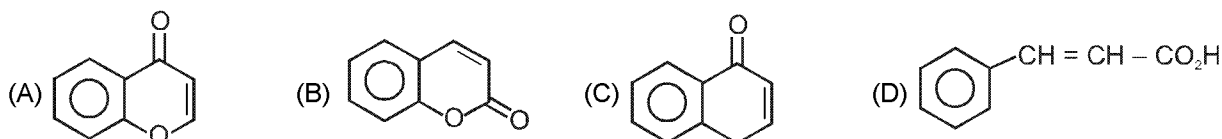
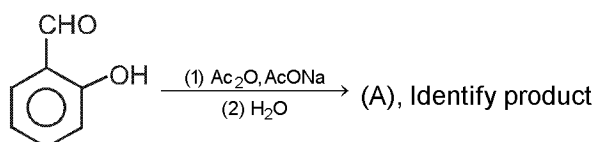
6.



Compound X in the above reaction is



7.



8.

(a) Give one chemical test to distinguish between the following pairs of compounds  
 (i) Ethylamine and aniline      (ii) Aniline and benzylamine      (iii) Aniline and N-methylaniline.

(b) Accomplish the following conversions :

- |                                           |                                               |
|-------------------------------------------|-----------------------------------------------|
| (i) Nitrobenzene to benzoic acid          | (ii) Benzene to m-bromophenol                 |
| (iii) Benzoic acid to aniline             | (iv) Aniline to 2, 4, 6-tribromofluorobenzene |
| (v) Benzyl chloride to 2-phenylethanamine | (vi) Chlorobenzene to p-chloroaniline         |
| (vii) Aniline to p-bromoaniline           | (viii) Benzamide to toluene                   |
| (ix) Aniline to benzyl alcohol.           | (x) Aniline to 1, 3, 5-tribromobenzene.       |



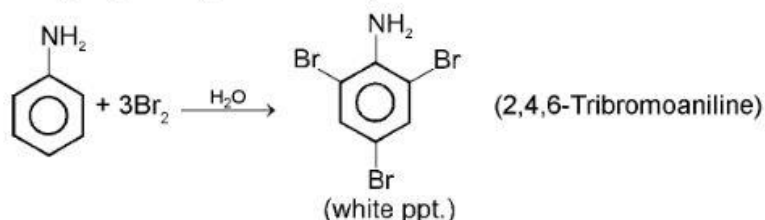
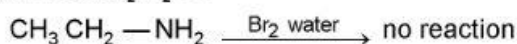
# Answer Key

## DPP No. # 26

1. (A)      2. (C)      3. (D)      4. (B)      5. (C)  
6. (B)      7. (B)

8. (a)

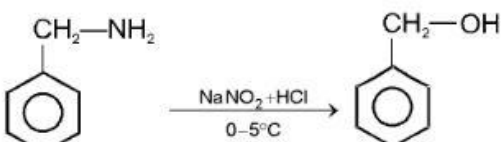
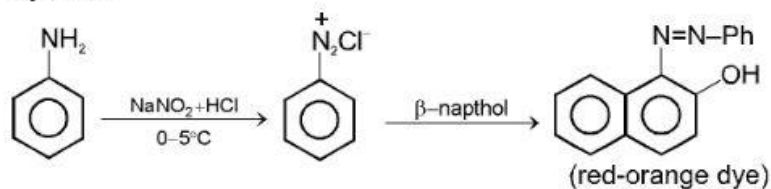
(i) With  $\text{Br}_2/\text{H}_2\text{O}$  :



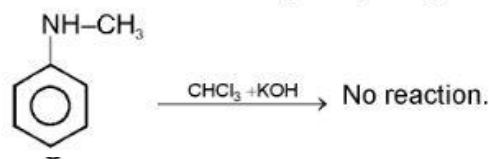
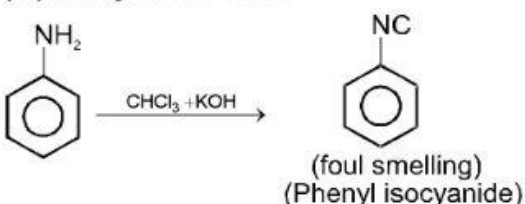
(ii) With  $\text{Br}_2/\text{H}_2\text{O}$  :

Aniline give white ppt. of 2,4,6-tribromoaniline while benzyl aniline give ortho & para bromo benzyl aniline or

Dye test :



(iii) Carbylamine test :



(b).

